

## 5.5 TONNE FOUR- POST COMMERCIAL ALIGNMENT LIFT 3 PHASE

With great performance, this is the perfect lift to meet  
the needs of Workshops.

Item no. LT455A



 **FAST**  
**INSTALLATION**

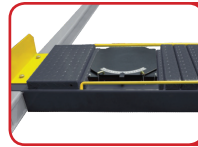
LT455A

**STEINER**<sup>™</sup>

# FOUR- POST 5.5 TONNE

## FEATURES

- › Electro-air control operation system.
- › Mechanical self-lock and air-driven safety release.
- › Electrical hydraulic power system, cable-driven.
- › Skid proof diamond platform.
- › Adjustable platform and adjustable safety lock ladders.
- › Dual safety device: In case the primary safety locks are out of operation, the lift would also be locked automatically by a second safety device.
- › Adjustable turnplate positions to fit the different wheel base.
- › 1x Rolling Jack included



Adjustable turnplate blocks to fit various wheel bases vehicles.



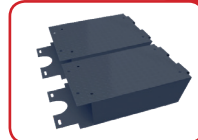
New rear-slip ball sets. Optional LED light kits is fitted for every model of AMGO 4-post lifts. Kits No. LT0005



Rolling Jack J6A: pneumatic hydraulic type 2,800kg Kit No. LT280J



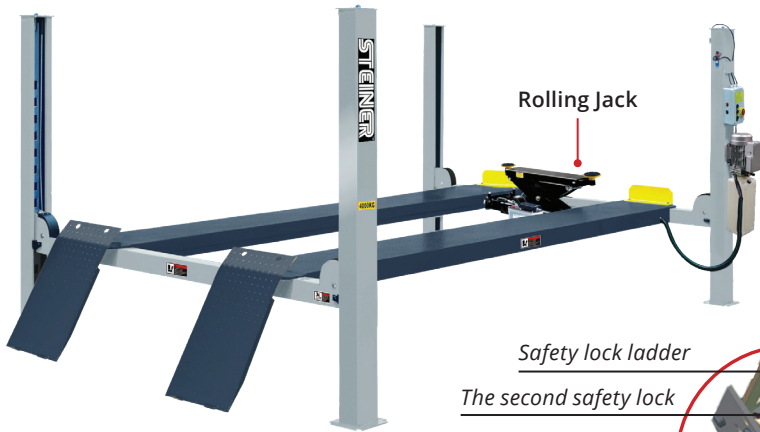
Optional airline kits. Easy to install with all models of rolling jacks with pneumatic pump. Kits No. LT0001



Optional platform extension kits adds an extra 660mm length to the platform. Kits No. LT0003

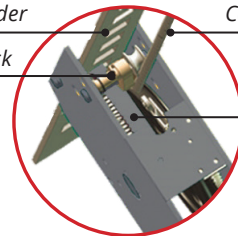


Optional adjustable blocks for alignment 4 post lift. Kit No.: 40905



Item no. LT455A

Double-safety locks



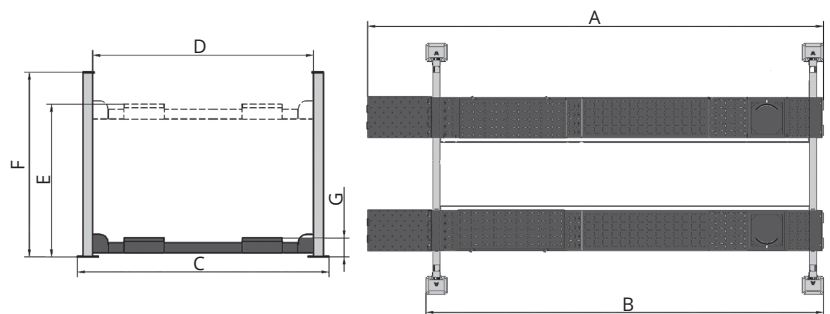
Safety lock ladder  
The second safety lock

Cable

The first safety lock

## SPECIFICATIONS

| Style                       | Alignment |
|-----------------------------|-----------|
| Lifting capacity            | 5500kg    |
| Lifting time                | 60S       |
| Overall Length (Inc. Ramps) | A 6012mm  |
| Overall Length (No Ramps)   | B 5100mm  |
| Overall Width               | C 3208mm  |
| Width Between Columns       | D 2852mm  |
| Lifting Height              | E 1915mm  |
| Overall Height              | F 2185mm  |
| Minimum Height              | G 220mm   |
| Motor                       | 4.0HP     |
| Gross Weight                | 1326kg    |



# STEINER™