

4 TONNE FOUR-POST COMMERCIAL LIFT

With great performance, this is the perfect lift to meet
the needs of garage and shop owners.

SKU: LT440A



Steiner four post lift are made stronger, more versatile, and easier to use.

 **FAST**
INSTALLATION

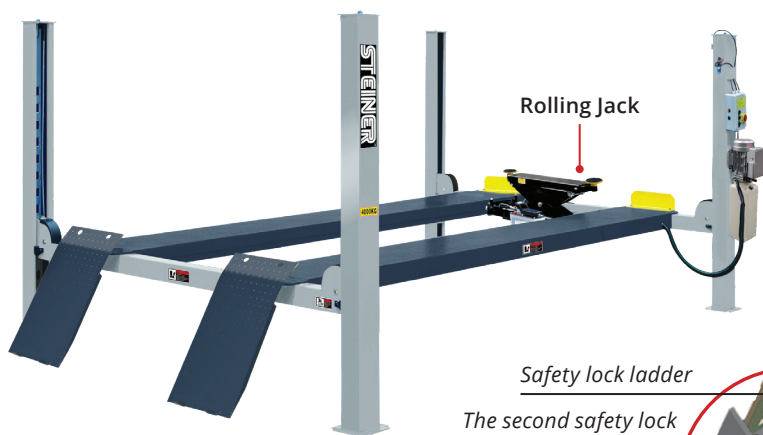
LT440A

STEINER[™]

FOUR-POST 4 TONNE

FEATURES

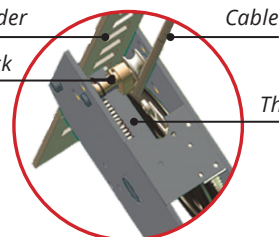
- › Electro-air control operation system.
- › Mechanical self-lock and air-driven safety release.
- › Electrical hydraulic power system, cable-driven.
- › Skid proof diamond platform.
- › Adjustable platform and adjustable safety lock ladders.
- › Dual safety device: In case the primary safety locks are out of operation, the lift would also be locked automatically by a second safety device.
- › Adjustable turnplate positions to fit the different wheel base.



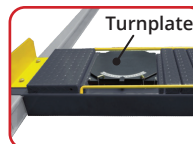
SKU: LT440A

Safety lock ladder
The second safety lock

Double-safety locks



Cable
The first safety lock



Adjustable turnplate blocks to fit various wheel bases vehicles.



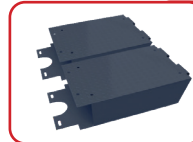
New rear-slip ball sets. Optional LED light kits is fitted for Steiner LT440A 4-post lifts. Kits No.:40102002



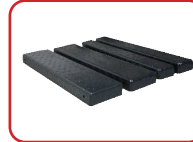
Optional Rolling Jack
J6H: manual hydraulic type 2,800kg
J6A: pneumatic hydraulic type 2,800kg
RJ-8A pneumatic hydraulic type 3,500kg.



Optional airline kits. Easy to install with all models of rolling jacks with pneumatic pump. Kits No.:40102



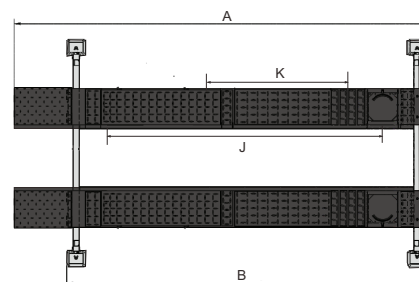
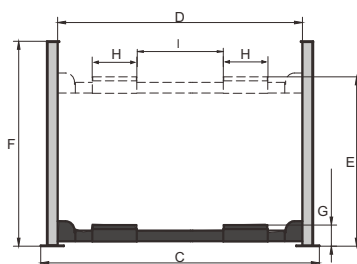
Optional platform extension kits adds an extra 660mm length to the platform. Kits No.40903



Optional adjustable blocks for alignment 4 post lift. Kits No.: 40905 (used with kits 40903 or 41203)

SPECIFICATIONS

Style	Alignment
Lifting capacity	4000kg
Lifting time	46S
Overall Length (Inc. Ramps)	A 5512mm
Overall Length (No Ramps)	B 4600mm
Overall Width	C 3208mm
Width Between Columns	D 2852mm
Lifting Height	E 1915mm
Overall Height	F 2185mm
Minimum Height	G 220mm
Runway width	H 508mm
Width Between Runway	I 1300mm
Max. Four Wheel Align	J 3460mm
Min. Four Wheel Align	K 2000mm
Motor	3.0HP
Gross Weight	1145kg



STEINER™